

MEETS STANDARDS FOR



EN ISO:3059

SPECTROLINE®

# TRITAN™ 365 SERIES

## Powerful NDT Inspection Lamps

TRI-365 Series

*Mobile, battery-pack operated versions available.*

Available in three models to meet your specific NDT inspection requirements: high-intensity, standard-intensity, and standard-intensity with integral black light filters.

**LONG-LASTING UV-A LENSES**  
reduce the rate of solarization

**BUILT-IN FANS**  
maintain optimum light output

**WHITE LIGHT LED**  
allows for scanning surface flaws

**FACEPLATE\***  
with or without integral black light filters

**RUBBER BUMPER**  
with Borofloat® glass lens protects LEDs from damage

127955  
**STANDARD FACEPLATE\***



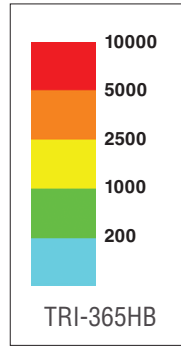
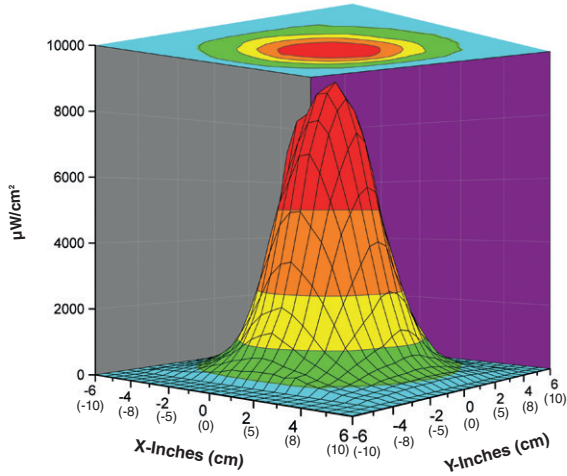
128196  
**FACEPLATE\***  
with integral black light filters



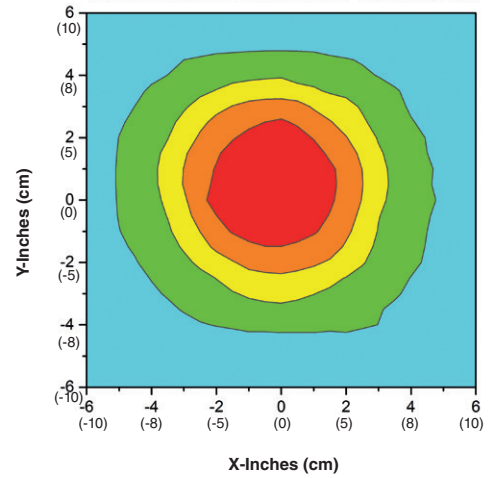
**CERTIFICATE OF LIGHT OUTPUT**  
included with lamp

# High Intensity UV-A Beam Profile

Surface Contour Profile at 15 in (38 cm)

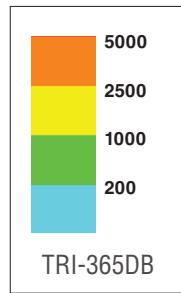
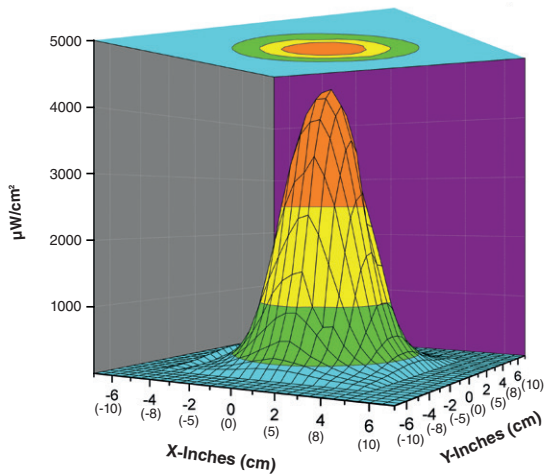


Top Intensity Profile at 15 in (38 cm)

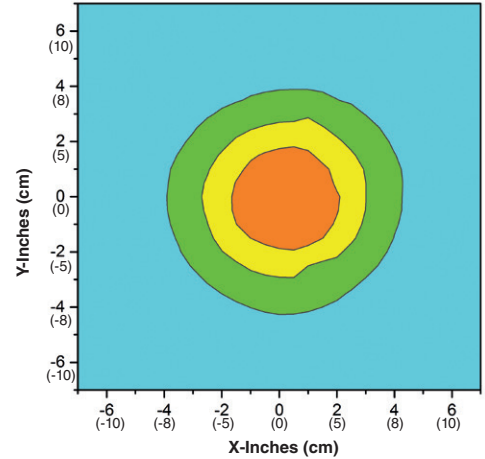


# Standard Intensity UV-A Beam Profile

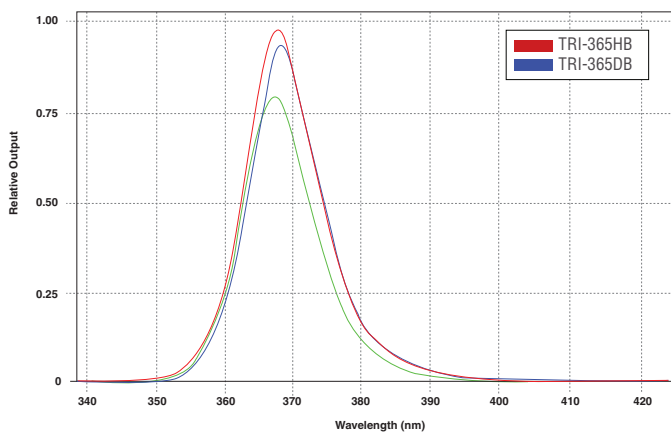
Surface Contour Profile at 15 in (38 cm)



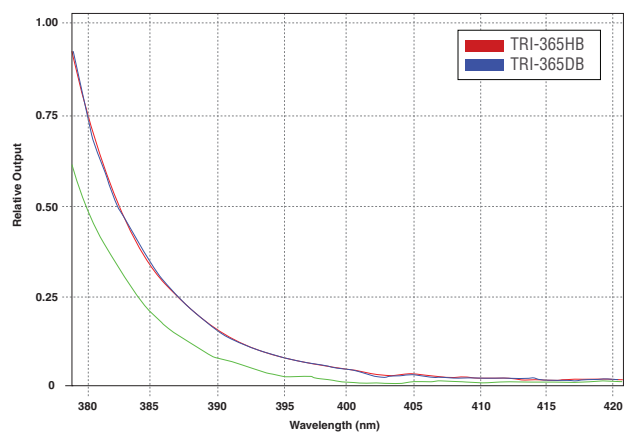
Top Intensity Profile at 15 in (38 cm)



Normalized UV Irradiance



Select Wavelength With and Without Black Light Filter





## TRITAN™ 365 M-SERIES

Portable, battery-operated AC/DC lamp kits. Include TRITAN™ 365 UV-A lamp, rechargeable NiMH battery pack, power supply adapter with AC and DC cord sets, smart AC charger, UV-absorbing spectacles and soft carrying case.



**TRITAN™ 365  
PS-200A**  
Industrial Power Supply  
(accessory)



**TRITAN™ 365  
PS-300A**  
In-Line Power Supply  
(accessory)

## Replacement Parts and Accessories

IMAGE	PART #	DESCRIPTION	IMAGE	PART #	DESCRIPTION
	129141	Standard 8 foot (2.4 m) AC power cord		FP-365	Rubber bumper with Borofloat® glass
	129145	Extra-long 20 foot (6.1 m) AC power cord		PSA-250A	AC/DC power supply adapter for "M" series lamps
	129162	3.5 foot (1.1 m) DC power cord for "M" series lamps		PS-200A	Industrial power supply / primary cord: 8 feet (2.4 m); secondary cord: 20 feet (6.1 m).
	127933	Particulate filter assembly		PS-300A	In-line power supply / primary cord: 8 feet (2.4 m); secondary cord: 8 feet (2.4 m).
	127955	Standard faceplate		UL-110	Long lasting lens
	128196	Faceplate with integral black light filters		UVS-30	UV-absorbing spectacles
	BP-30	Battery pack with 12V rechargeable NiMH battery		B-6*	Bench mount
	BR-150A	Smart AC charger		W-6*	Bench mount with pin
	CC-370A	Soft carrying case		WM-100*	Wall mounting bracket

\* Must be used in conjunction with LH-300A for connecting

## Series Lamp Comparisons

TRITAN™	PART #	HIGH INTENSITY	STANDARD INTENSITY	INTEGRAL BLACK LIGHT FILTER	NOMINAL STEADY-STATE UV-A INTENSITY at 15 in (38 cm) ①	UV-A COVERAGE AREA at 15 in (38 cm) at minimum 1,200 μW/cm²
<b>365 Series Versions</b>	TRI-365HB	●			9,000 μW/cm²	6.5 in (16.5 cm)
	TRI-365DB*		●		< 5,000 μW/cm²	5.5 in (14 cm)
<b>365 Series AC/DC Mobile Versions</b>	TRI-365MHB	●			9,000 μW/cm²	6.5 in (16.5 cm)
	TRI-365MDB*		●		< 5,000 μW/cm²	5.5 in (14 cm)
	TRI-365MDBB*		●	●	< 5,000 μW/cm²	5.5 in (14 cm)

\*These versions are “tuned” to ensure that they provide a maximum steady-state UV-A intensity of less than 5,000 μW/cm² at 15 in (38 cm)

① UV-A intensity reading taken with the Spectroline® AccuMAX™ Series meter, and is factory set to the value shown.



## Technical Features

<b>Visible Light Measurement</b>	< 2 foot-candles (22 lux)
<b>Light Source</b>	3 UV-A LEDs, 1 white light LED
<b>Lamp Style</b>	Pistol grip
<b>Lamp Head Diameter</b>	3.25 in (8.25 cm)
<b>Length</b>	8 in (20.3 cm)
<b>Weight</b>	1 lb (454 g)
<b>White Light LED Intensity</b>	400 foot-candles (4,306 lux)
<b>Power Requirements</b>	120VAC / 12VDC (also available in 230V, 240V and 100V versions)
<b>Battery Pack</b>	Type: 12V, NiMH (rechargeable) Run time: 3.5 hours continuous Charge time: 2 hours
<b>Cooling System</b>	Built-in fans